

# THE ECLIPSE



# UNIQUELY DESIGNED



## CUSTOM BUILT TO YOUR SPECIFICATIONS

Every Eclipse shading system is custom made and professionally installed by our independent dealers to meet your individual requirements. The Eclipse model is available up to 40' wide with projections up to 11'6" (up to 22' wide x 11'6" projection with the semi cassette option). Eclipse shading components meet stringent ISO 9001 and TUV standards and are assembled in the USA by skilled craftspeople.



## ADVANCED BELT TECHNOLOGY

While others have exposed cables or chains Eclipse incorporates our unique Advanced Belt Technology - ABT. Our Eclipse model ABT consists of 9 individually wound cables encased in a poly-carbon, UV resistant coating. This time proven feature has been an Eclipse exclusive from our beginning and will provide you with a long, worry free life for your shading system.



# TO MEET YOUR NEEDS



## MOTORIZED FOR EASY USE

Your Eclipse features a UL listed motor from Somfy, the world leader in home automation. You can operate your shading system with a wireless wall switch, a hand held remote, a smart device... or from all of these! To further increase the effectiveness of your shading system, we offer automatic sun and motion sensors - ask your dealer for more details.



## MOUNTING AND FABRIC PROTECTION

The Eclipse can be ordered 3 ways:

- With a fully exposed rolled up fabric referred to as an “Open Roller” - typically for under soffit mounting
- With a protective Standard Hood for wall mounting
- With a Semi Cassette providing full fabric protection for any mounting application - we recommend this option especially when roof mounting up to 22’ wide x 11’6” projection

# PRODUCT OPTIONS



## DROP SHADE

Add even more solar protection while increasing your privacy with the Eclipse Drop Shade. This option features an open mesh, sun screen fabric that extends down from the front bar over the width of the awning. The Drop Shade is self storing and motorized. This option is not available with the Semi Cassette.



## LUNAR LIGHTING

Add a unique element to your evening entertaining with several lighting options. Lunar Lighting (shown) is typically applied to the back of the front bar and offers a soft warm glow light which can be turned on or off with the same multi-channel remote/transmitter as your awning. An LED lighting option is available with light strips applied to the arms of the awning (dealer installed). This UL-listed LED light kit offers 16 levels of light in either warm (3000K) or cool (6000K) lighting and like lunar lighting, can be controlled with the same multi-channel remote/transmitter or multi-channel wireless wall switch. Research suggests that warm lights attract less bugs.



## ELECTRONIC ACCESSORIES

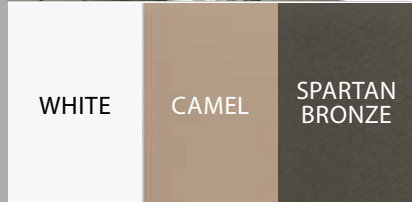
Our world class wireless components make operating your shading system effortless.

- Wind/Motion Sensor: This accelerometer sensor attached to the awning's framework will retract the unit if it gets too windy - adding a level of safety and security.
- Sun Sensor: This sensor, typically mounted to an exterior wall, will automatically extend the awning once the preset sun level is attained, and will automatically retract your shading system when the sun passes.
- TaHoma: With TaHoma®, create scenarios to link your connected devices and activate them with just a click on your smartphone!



## SEMI CASSETTE HOOD

Completely protect your fabric from the elements and increase your level of security with the Semi Cassette option. This option is available on the Eclipse model up to 22' wide x 11'6" projection.



## HARDWARE TO MATCH YOUR DÉCOR

Eclipse offers three architecturally pleasing colors to either match or accentuate your home. Our pretreated powder coated finishes are second to none in durability and appearance.



## SUNBRELLA SHADE FABRICS - FROM SERENE TO STUNNING

Eclipse offers a wide array of long lasting, fade resistant, 100% acrylic fabrics from Sunbrella. The Sunbrella Shade fabrics are specifically made for heavy duty applications such as retractable awnings. Each fabric cover is computer cut, has ultrasonically sealed edges, and is sewn with Tenera thread to provide a full 10 year warranty on the fabric and the seams. Make a bold statement or blend harmoniously to your home's décor... whatever your choice, we have the fabric for you.



## AN ADDED LEVEL OF SECURITY

Looking for a lifetime warranty on your complete shading system - from frame to fabric, motor and electronics? Ask your dealer for complete details on our platinum protection programs.

# THE NEXT GENERATION IN SHADING



## DELIVERING VALUE

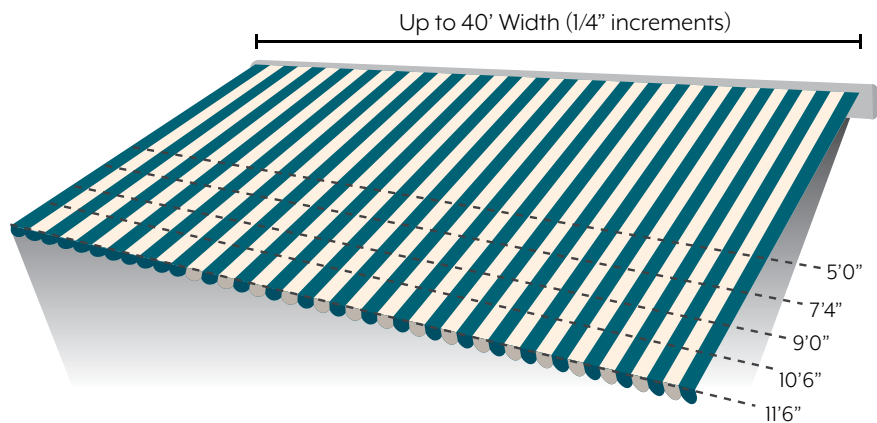
The Eclipse is our signature model of shading systems. This time tested model has shaded homes and expanded outdoor living throughout the country since our company's inception. The Eclipse offers excellent value by incorporating a full line of product options, allowing you to design a shading system to fit your individual needs. Eclipse has been rated as the #1 brand of retractable awnings for 10 years running!

## ENDURING PERFORMANCE

The Eclipse can be mounted on virtually any surface and is ideal for both residential and commercial applications. This "green" solution will expand your living space, reduce interior solar heat gain, block glare and prevent fading of your furnishings - year after year. Add a European cafe' feel to your home and make the most of your outdoor living. With dozens of long lasting fabrics in an array of designer colors and patterns, you can create your own getaway just a few steps out of your door. The Eclipse is a fully retractable shading system. With the touch of a button, you can fully retract your awning, keeping it safe from the elements when not in use.



# PRODUCT FEATURE OPTIONS



## SIZES AVAILABLE

The Eclipse shading system is custom made to fit your unique space. With widths up to 40' wide and projections up to 11'6", we've got you covered!

The Eclipse components meet stringent ISO 9001 and TUV standards and are assembled in the USA by skilled craftspeople.



## PRODUCT WARRANTY\*

10 years on Frame  
10 years on Fabric  
5 years on motor and electronics

\*Please review warranty for complete details



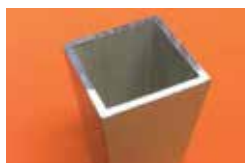
## ADVANCED BELT TECHNOLOGY

The Eclipse exclusive tension transmission system, has been tested and proven for almost 2 decades on performance.

This design does not stretch or breakdown over time, keeping your fabric taut for years to come.

## ARM LIFE EXPECTANCY:

➔	ABT	—	<b>60,000 Cycles</b>
	CHAIN	—	8,000 Cycles
	CABLE	—	5,000 Cycles



## ALUMINUM TORSION BAR

The Eclipse features a non corrosive torsion bar that is powder coated to match the framework of the awning.



ROOF MOUNT SOFFIT MOUNT

## MOUNTING

Wall, soffit, or roof mounting available to match your needs.



## MOTORIZED

Easy motorized touch of a button. Operation includes the functionality of a manual override feature should you lose power.



Your independently owned and operated dealer

99.2% of Eclipse customers would recommend us to a friend or neighbor. (based on 2022 & 2023 Eclipse owners feedback)

Verified, third party customer reviews since 1/1/18 to date  
Powered by:



★★★★★  
Product Rating 4.9  
★★★★★  
Dealer Rating 4.8

For more photos, customer feedback and additional product details, please visit:

[ECLIPSESHADING.COM](http://ECLIPSESHADING.COM)